



TEST REPORT

Product: Silicone Flange Sealant
Applicant: Hangzhou Fenloc Bondtek Co., Ltd.
Address: OMC, Yuelian, Jinhua, Xiaoshan, Hangzhou, Zhejiang, China
Manufacturer: Hangzhou Fenloc Bondtek Co., Ltd.
Address: OMC, Yuelian, Jinhua, Xiaoshan, Hangzhou, Zhejiang, China
Model No: N/A
Date of Sample Received: 2019-05-23
Testing Period: 2019-05-23 to 2019-05-29
Verification Requested : With reference to RoHS Directive (EU) 2015/863 amending 2011/65/EU.
Verification Method : Please refer to next page(s).
Verification Result : Please refer to next page(s).
Verification Conclusion : Based on the verification results of the submitted samples, the results of Lead, Mercury, Cadmium, Hexavalent chromium, Polybrominated biphenyls (PBBs), Polybrominated diphenyl ethers (PBDEs) do not exceed the limits as set by RoHS Directive (EU) 2015/863 amending Annex II to Directive 2011/65/EU.
Note : The test results are related only to the tested items. The report shall not be reproduced except in full without the written approval of the testing laboratory.

Check by : Jane He Date : 2019-05-29
(Jane He)

Approved by : July Yan Date : 2019-05-29
(July Yan)





ROHS TEST REPORT
Report No.: ATL20190523406R01

Test Method:

(1) With reference to IEC 62321.

Testing item	Pretreatment method	Measuring instrument	MDL
Lead(Pb)	IEC 62321:2013	ICP-OES	2 mg/kg
Cadmium(Cd)	IEC 62321:2013	ICP-OES	2 mg/kg
Mercury(Hg)	IEC 62321:2013	ICP-OES	2 mg/kg
Chromium(Cr VI)	IEC 62321:2008	UV-Vis	2 mg/kg
PBBs/ PBDEs	IEC 62321:2008	GC-MS	5 mg/kg

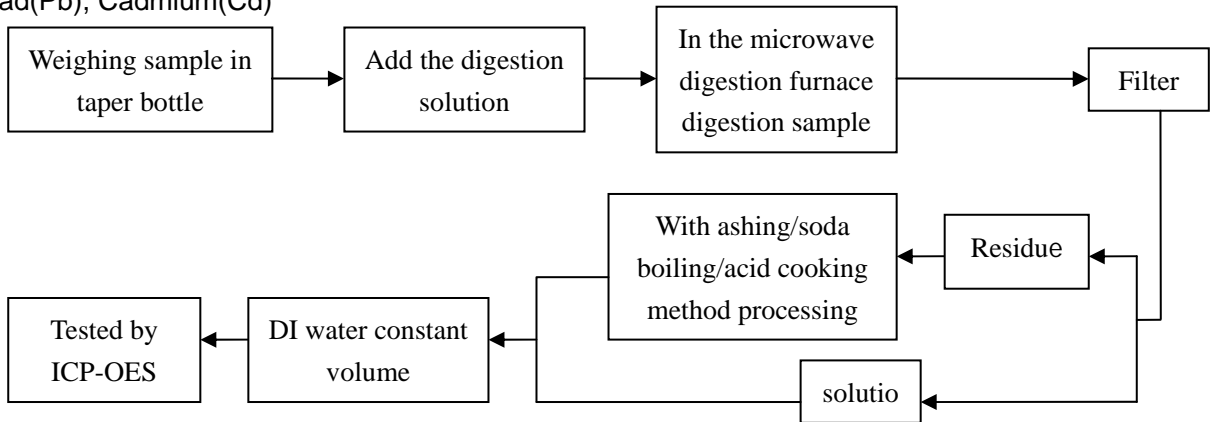
(2) With reference to EN 14372:2004

Testing item	Pretreatment method	Measuring instrument	MDL
DIBP、DEHP、 DBP、BBP	EN 14372:2004	GC-MS	0.003 mg/kg

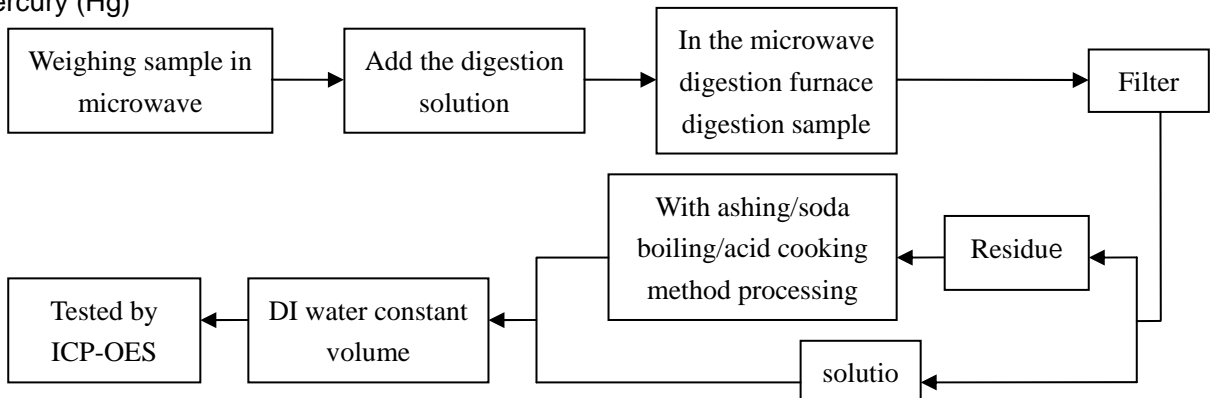


Test Flow:

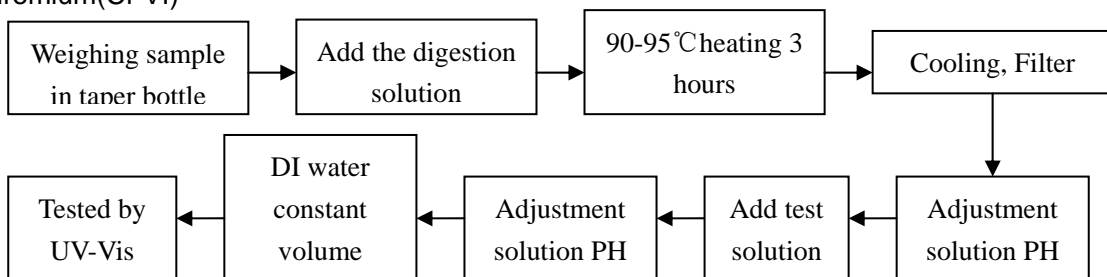
1. Lead(Pb), Cadmium(Cd)



2. Mercury (Hg)

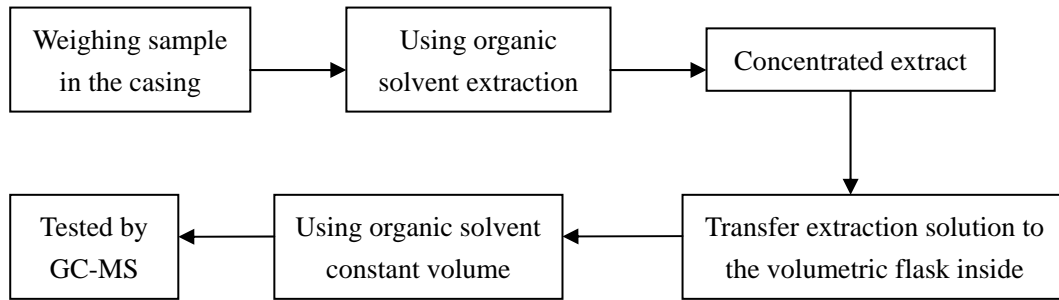


3. Chromium(Cr VI)

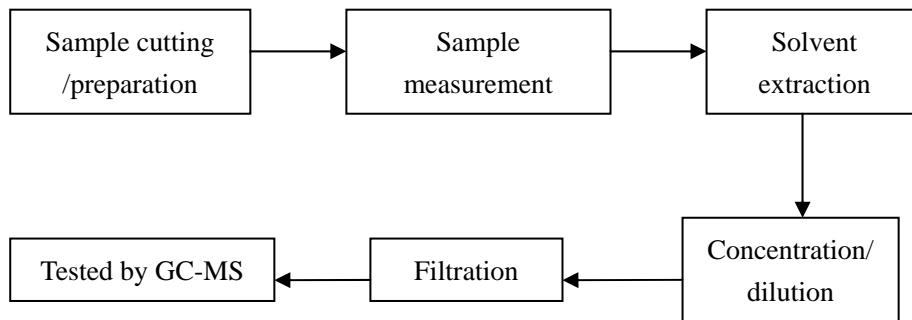




4. PBBs/ PBDEs



5. DEHP/ BBP/ DBP/ DIBP





ROHS TEST REPORT
Report No.: ATL20190523406R01

Test Results:

Testing Item	Unit	ROHS Limit	Result					
			1	2	3	4	5	6
Lead(Pb)	mg/kg	1000	N.D.	---	---	---	---	---
Cadmium(Cd)	mg/kg	100	N.D.	---	---	---	---	---
Mercury(Hg)	mg/kg	1000	N.D.	---	---	---	---	---
Chromium(Cr VI)	mg/kg	1000	N.D.	---	---	---	---	---
Sum of PBBs	mg/kg	1000	N.D.	---	---	---	---	---
Monobromobiphenyl	mg/kg	/	N.D.	---	---	---	---	---
Dibromobiphenyl	mg/kg	/	N.D.	---	---	---	---	---
Tribromobiphenyl	mg/kg	/	N.D.	---	---	---	---	---
Tetrabromobiphenyl	mg/kg	/	N.D.	---	---	---	---	---
Pentabromobiphenyl	mg/kg	/	N.D.	---	---	---	---	---
Hexabromobiphenyl	mg/kg	/	N.D.	---	---	---	---	---
Heptabromobiphenyl	mg/kg	/	N.D.	---	---	---	---	---
Octabromobiphenyl	mg/kg	/	N.D.	---	---	---	---	---
Nonabromobiphenyl	mg/kg	/	N.D.	---	---	---	---	---
Decabromobiphenyl	mg/kg	/	N.D.	---	---	---	---	---
Sum of PBDEs	mg/kg	1000	N.D.	---	---	---	---	---
Monobromodiphenyl ether	mg/kg	/	N.D.	---	---	---	---	---
Dibromodiphenyl ether	mg/kg	/	N.D.	---	---	---	---	---
Tribromodiphenyl ether	mg/kg	/	N.D.	---	---	---	---	---
Tetrabromodiphenyl ether	mg/kg	/	N.D.	---	---	---	---	---
Pentabromodiphenyl ether	mg/kg	/	N.D.	---	---	---	---	---
Hexabromodiphenyl ether	mg/kg	/	N.D.	---	---	---	---	---
Heptabromodiphenyl ether	mg/kg	/	N.D.	---	---	---	---	---
Octabromodiphenyl ether	mg/kg	/	N.D.	---	---	---	---	---
Nonabromodiphenyl ether	mg/kg	/	N.D.	---	---	---	---	---
Decabromodiphenyl ether	mg/kg	/	N.D.	---	---	---	---	---
Diisobutyl phthalate(DIBP)	mg/kg	1000	N.D.	---	---	---	---	---
Bis-(2-ethylhexyl) Phthalate (DEHP)	mg/kg	1000	N.D.	---	---	---	---	---
Benzylbutyl Phthalate (BBP)	mg/kg	1000	N.D.	---	---	---	---	---
Dibutyl Phthalate (DBP)	mg/kg	1000	N.D.	---	---	---	---	---



ROHS TEST REPORT
Report No.: ATL20190523406R01

Sample Description:

1.Glue

Notes:

1mg/kg=1ppm = 0.0001%

N.D. = Not Detected (<MDL)

MDL = Method Detection Limit

/=Not Regulated

---=Not Applicable

SAMPLE PHOTO

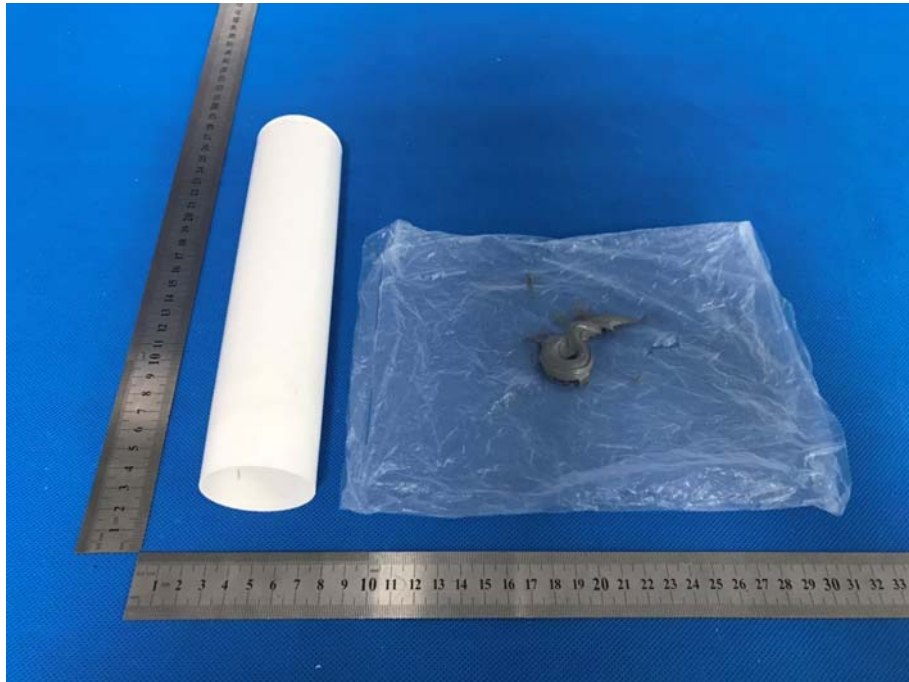


Fig.1

****End of Report****